

8/17/13

Eagle Mtn. with Dave Turan and Ekaterina ?

222-19A

site	p	Ap	Δe	e calc	e map	time	R
(A) Rider Hollow Trailhead	29.82	—	$R_1 = 0.864$	—	1970'	10:15 AM	$R_1 = \frac{(B) + (D) - (T)}{28.70 - 28.04} = \frac{3590 - 3020}{0.66} = 0.864$
(B) Balsam-Kaynes Col	28.70	0.00	—	—	3020'	11:44	
(C) 1st fir at large boulder	28.38	0.32	276	3296			
(D) Kaynes Summit	28.28	0.42	363	3383	3420'		
(E) Lunch ledge	28.38	0.32	276	3296			
(F) BC cut to clear trail	28.40	0.30	259	3279		1:20	
(G) Col	28.44	0.26	225	3245	3250'	1:30	
(H) Top ledge; fir return	28.30	0.40	346	3366		1:40	
(I) 3500 ft sign	28.11	0.59	510	3530			
(J) Eagle Summit on Trail	28.04	0.66	570	3590 ✓	3590	2:00	
(K) Eagle Summit	28.07??	?			3600	2:35	
(J) return to trail	28.04	0.58	570	3590 ✓	3590	2:45	
(H) top ledge	28.32	0.30	295	3315			
(G) Col	28.42	0.20	197	3217	3250'	3:14	
(E) Lunch ledge	28.30	0.32	315	3335		3:30	
(D) Haynes summit	28.24	0.38	374	3394	3420'	3:40	
(BB) 3290' knob	28.34	0.28	275	3295		3:56	
(B) Balsam-Kaynes col	28.62	0.00	—	—	3020'	4:06	
(AM) ASN + 1st above KEM grave	29.02	-0.40	393	2627			
(A) Rider Hollow Trailhead	(not recorded)				1970'	5:06	

$R_2 = 0.983$

$R_2 = 0.983$

1

Haynes Eagle Trail Plan

8/17/13 19B

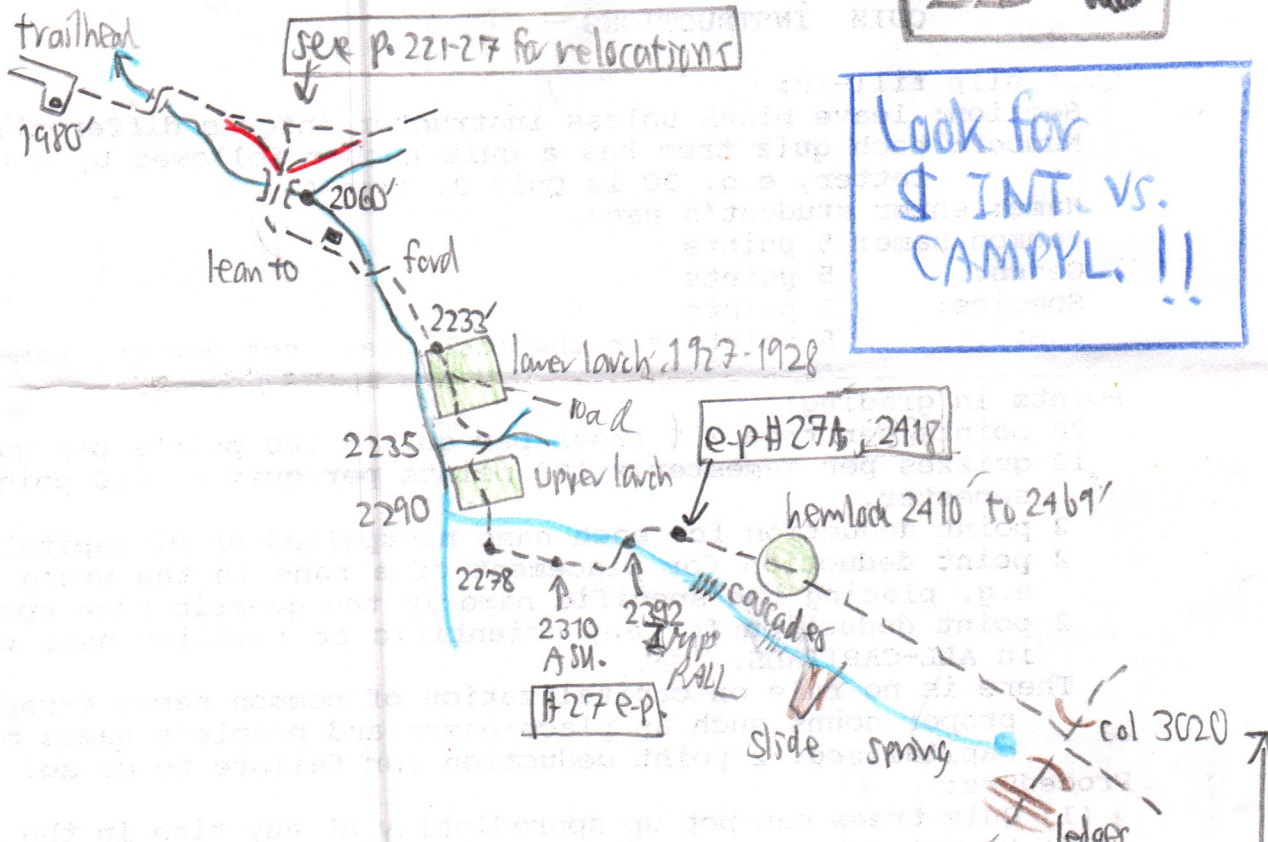
222-19B

Source pp.
for
compilation:

- 210-30
- 210-32
- 220-10
- 220-16
- 221-10

221-27
trail
relocations

225-7



Look for
\$ INT. VS.
CAMPYL. !!

